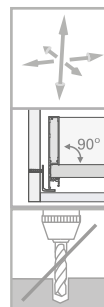


GIVI VIONARO H89 E H185

Laterais metálicas

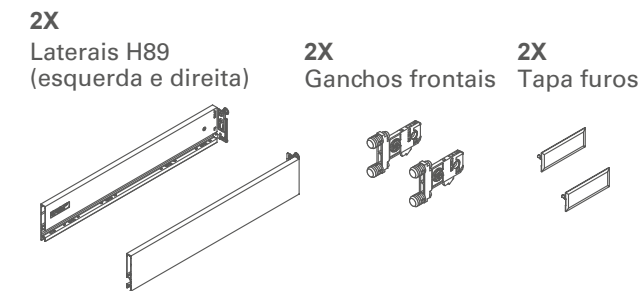
GIVI MOBILI ACESSÓRIOS PARA MÓVEIS LTDA.
 Rua João Bettega, 4.800, Módulo V - CEP 81350-000 - CIC - Curitiba - PR
 Fone: (41) 3906-8080 FAX: (41) 3906-8008
 www.givimobili.com.br

LATERAIS METÁLICAS VIONARO

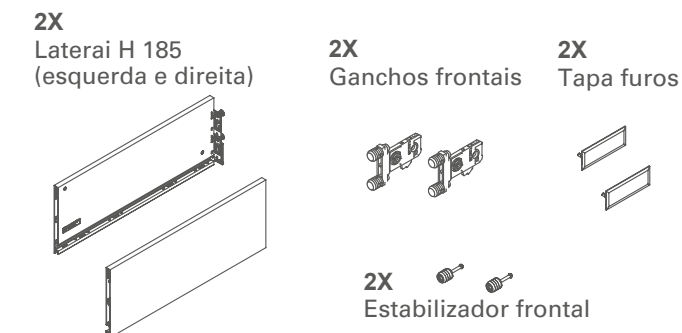


- Regulagem tridimensional da frente da gaveta;
- Não é necessário usinar a base;

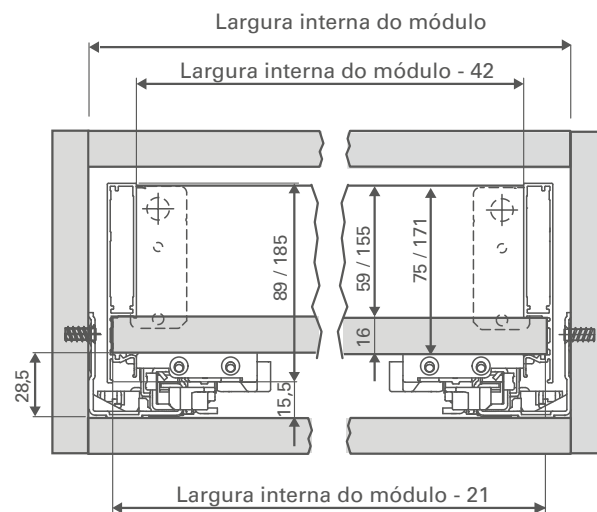
Componentes H89



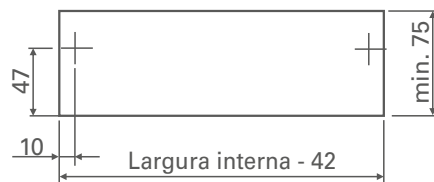
Componentes H185



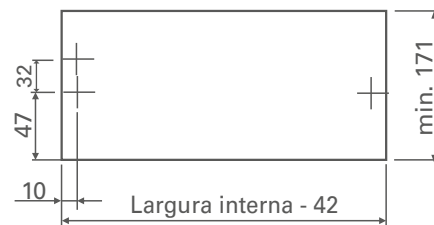
1 Medidas básicas do módulo



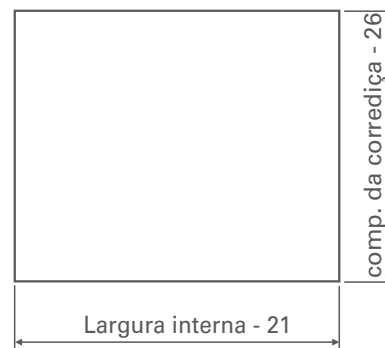
Painel traseiro H89



Painel traseiro H185

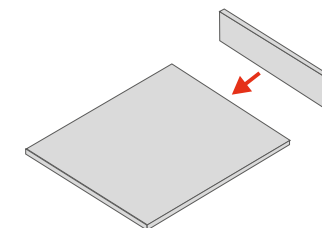


Base

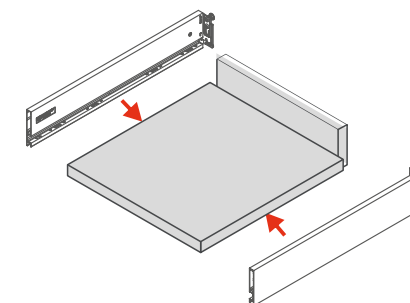


2 Montagem da gaveta

Fixe a base e o fundo de madeira.



Encaixe as laterais metálicas direita e esquerda na base e no fundo de madeira.



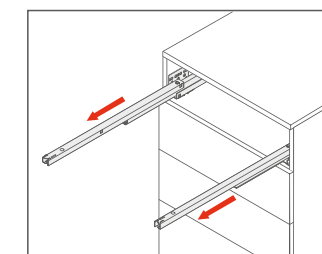
Obs.: fixação com a bucha que acompanha a lateral é opcional. A bucha pode ser retirada para fixação apenas com parafusos.

Obs.: não devem ser deixadas folgas entre a lateral e a base na parte interna da gaveta.

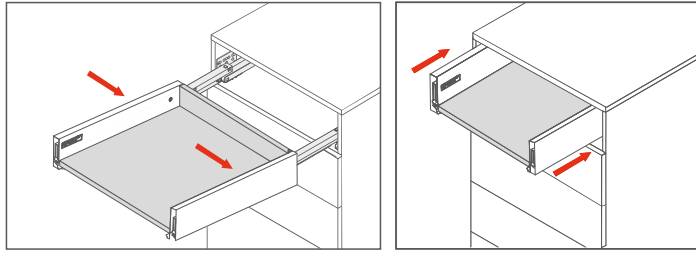


3 Instalação da gaveta

Extraia totalmente as corredeiras já instaladas no módulo.

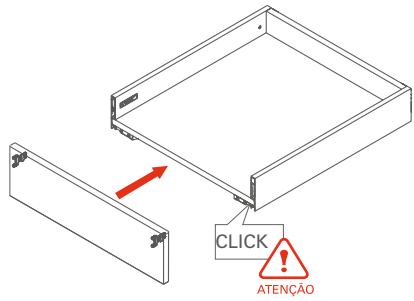


Posicione a gaveta montada na posição inclinada, sobre as corredeiras e feche a gaveta totalmente até o perfeito encaixe.



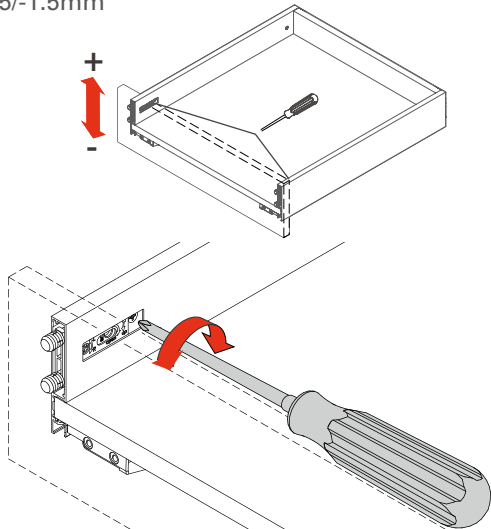
4 Instalação da frente da gaveta H89

Encaixe a frente da gaveta com os conectores frontais já instalados. O conector irá engatar automaticamente.

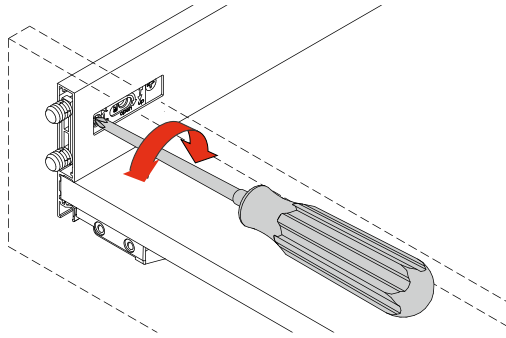
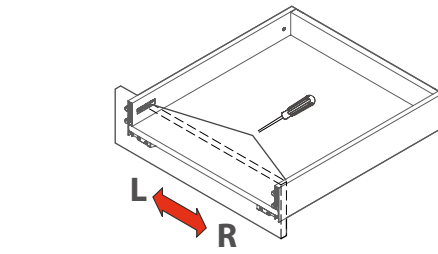


5 Regulagem H89

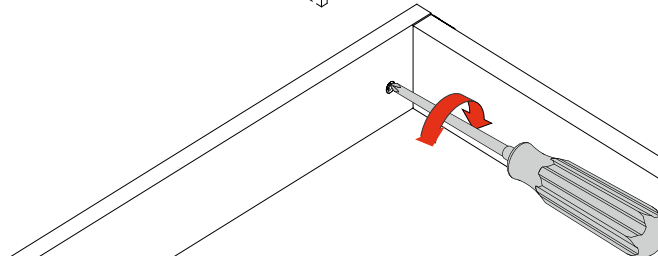
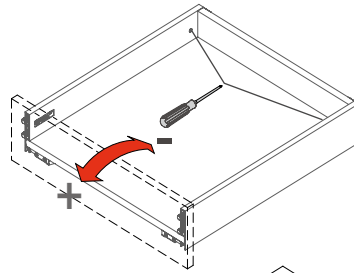
Ajuste de altura em ambos os lados +2.5/-1.5mm



Ajuste lateral +-1.5mm



Ajuste de angulo da frente +2.5/-1.5mm

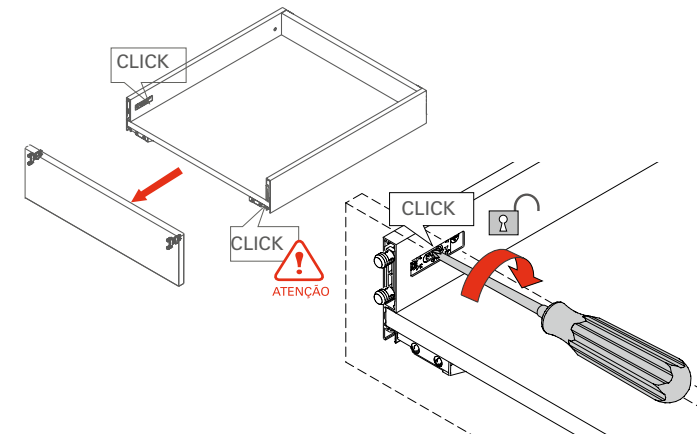


Não utilize parafusadeira para efetuar as regulagens.



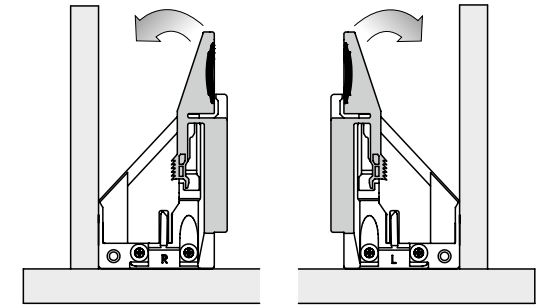
6 Desinstalação da frente da gaveta H89

Utilize chave Pozidrive nº 2 no parafuso do conector para liberar.

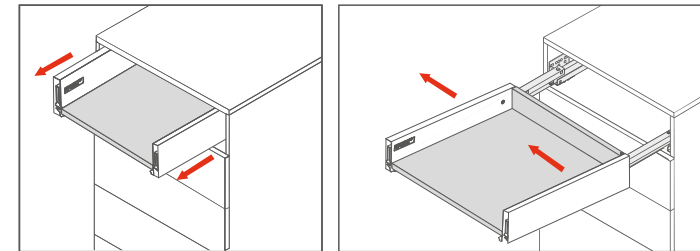


7 Remoção da gaveta

Extraia a gaveta e acione o dispositivo de bloqueio da alavanca em ambos os lados.



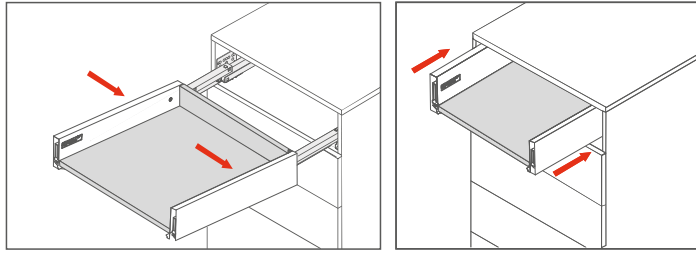
Levante a gaveta para desencaixar as laterais da corredeira e então remova a gaveta.



Não levantar a corredeira junto com a gaveta.

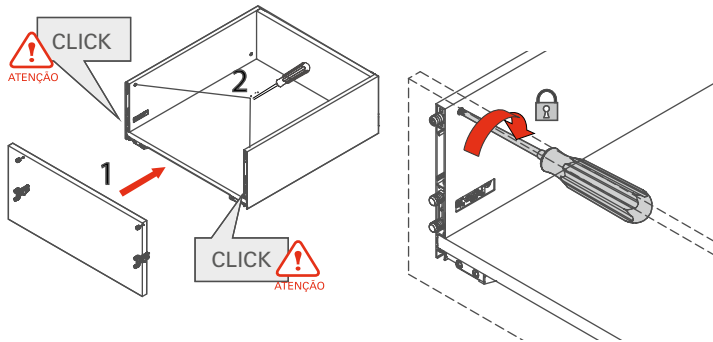


Posicione a gaveta montada na posição inclinada, sobre as corredeiras e feche a gaveta totalmente até o perfeito encaixe.



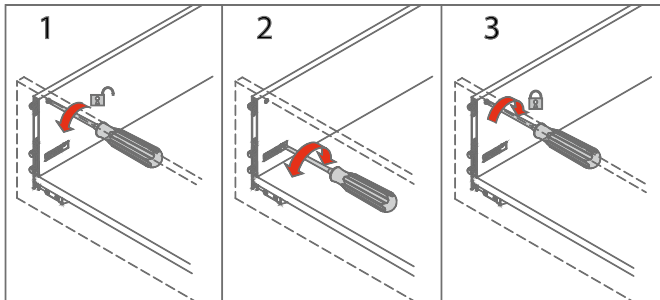
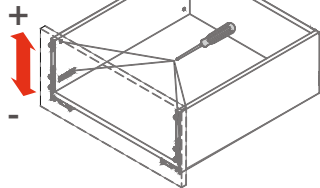
4 Instalação da frente da gaveta H185

Encaixe a frente da gaveta com os conectores frontais já instalados. O conector irá engatar automaticamente. Finalize travando os estabilizadores.

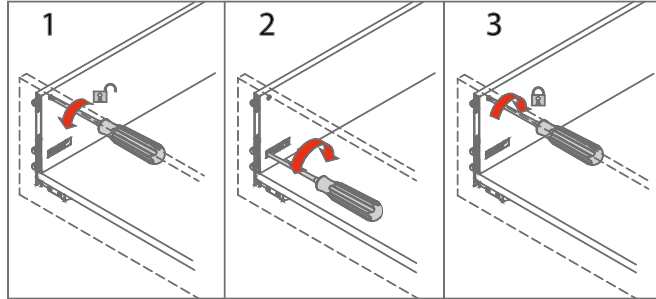
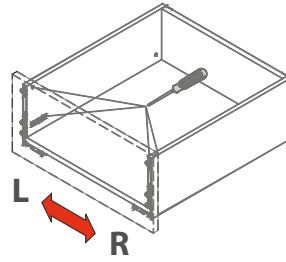


5 Regulagem H185

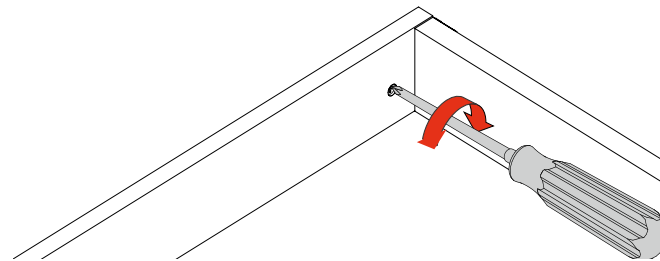
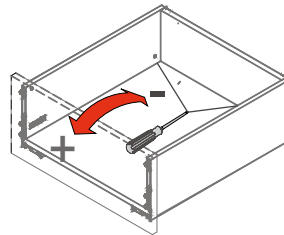
Ajuste de altura em ambos os lados
+2.5/-1.5mm



Ajuste lateral +-1.5mm



Ajuste de ângulo da frente
+2.5/-1.5mm



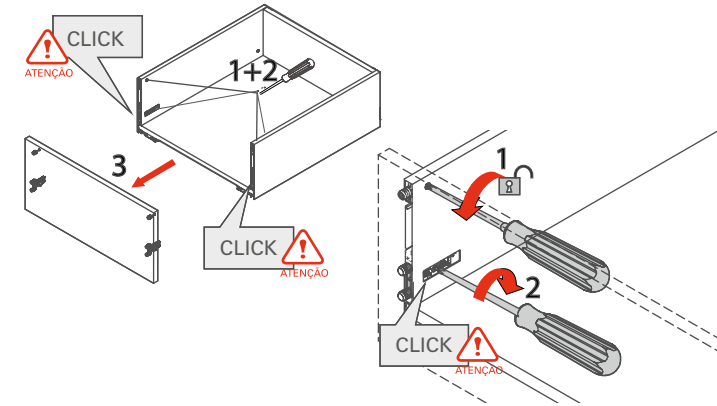
Não utilize parafusadeira para efetuar as regulagens.



6

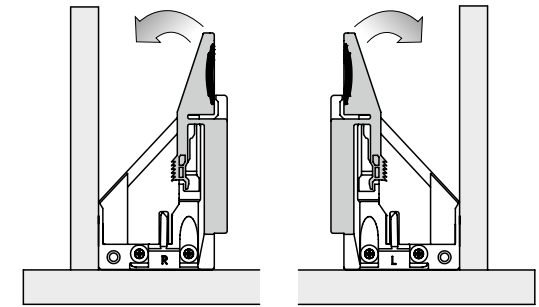
Desinstalação da frente da gaveta H185

Utilize chave Pozidrive nº 2 no parafuso do conector para liberar.

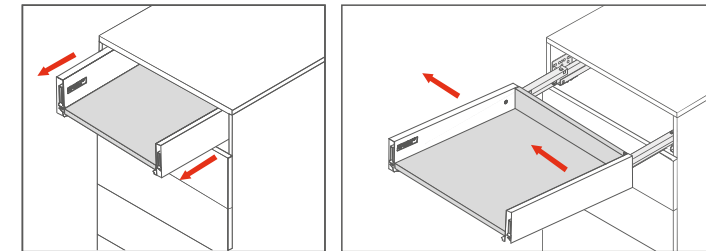


7 Remoção da gaveta

Extraia a gaveta e acione o dispositivo de bloqueio da alavanca em ambos os lados.



Levante a gaveta para desencaixar as laterais da corredeira e então remova a gaveta.



Não levantar a corredeira junto com a gaveta.

